

Quick Installation Guide for step-by-step installation of ETAP Software:

- ETAP Software, including Libraries, Example Projects, and Help Files
- ETAP License Manager, required for Stand-Alone and Network Licenses
- ETAP User Guide
- Data Exchange Manager - DataX

## Getting the New ETAP Release

### Digital Download

1. Log into your ETAP Help center account <https://helpcenter.etap.com>
2. Go to FAQ tab, click on Download ETAP and continue as prompted to save the Installation Package
3. Once the download is complete, extract the files and run ETAPINSTALLER.exe

### DVD

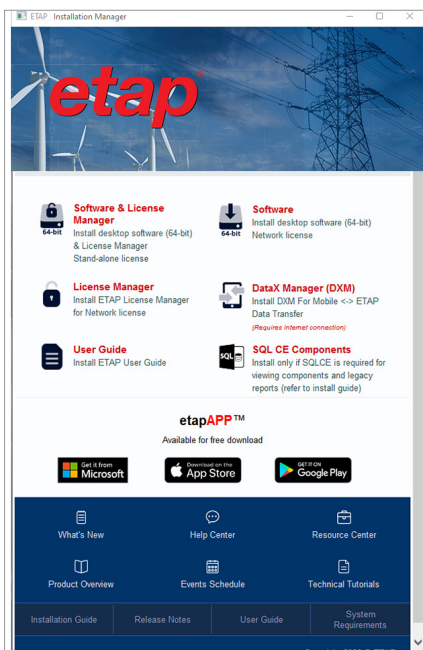
Insert ETAP DVD and run ETAPINSTALLER.exe

## 1. Preparing to Install ETAP

1. You must have administrator privileges to your computer
2. Close all other applications  
Note: ETAP installation automatically includes Engineering Device Library (.lib) and Main Program Executable (etaps64.exe) into Windows Defender Exclusion List. This prevents Windows Defender from scanning the engineering library when linked to a project file and improve overall performance.
3. Review System Requirements: <https://etap.com/system-requirements>

## 2. ETAP Installation Manager

### Installation Options



### Stand-Alone License

#### Install "Software & License Manager" locally

ETAP and ETAP License Manager will automatically be installed on the same computer. ETAP Security Key must also be located on this computer.

### Network License

#### Install "Software" locally and "License Manager" on your server

ETAP License Manager and the Security Key (hardware or software) must be installed on a Network Server, VM, or a Cloud.

### All Licenses

#### Install "User Guide" (pdf file) or DXM (ASP.Net web app) locally or network

DXM (Data eXchange Manager) provides communication services for NetPMTM (Network Project Modeling and Management) functionalities for multiple ETAP instances and etapAPPTM mobile devices. It should be hosted in cloud VM or a DMZ with an outward internet and inward corporate LAN facing NIC.

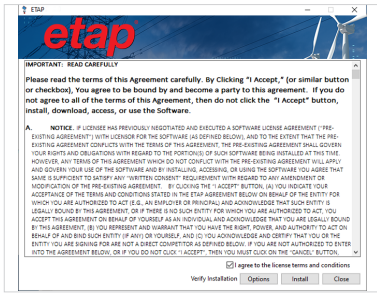
#### Install "SQL CE Components"

Install ONLY if SQL CE components are required to read out-of-support (legacy) SQL CE output report databases and rulebooks. Refer to installation guide for more details.

### Software Prerequisites

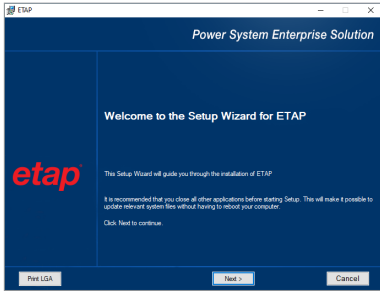
ETAP automatically installs Prerequisites as needed. For a complete list of Prerequisites, refer to the System Requirements.

### 3. License Agreement

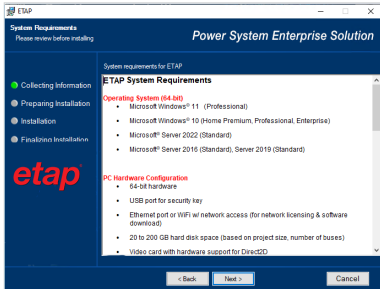


Select the installation options and accept the agreement. Refer to User Guide Chapter 2 –Setup for more details.

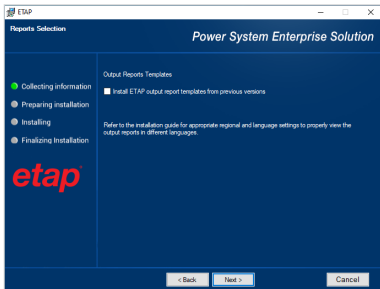
### 4. Welcome



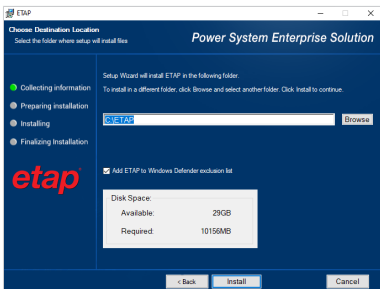
### 5. System Requirements



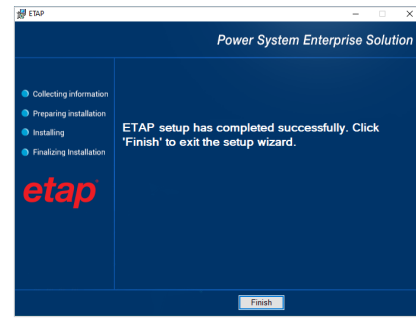
### 6. Previous Version Reports



### 7. Installation Path Selection



### 8. Installation Complete



### 9. Restart Computer

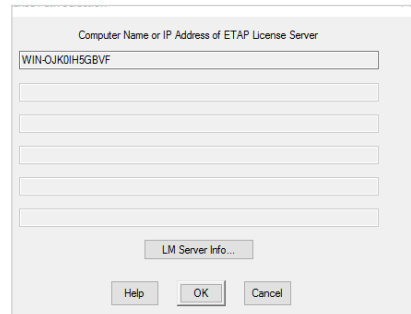
The Installer will prompt you to restart your computer to initialize ETAP.

### 10. Launching ETAP

Use the ETAP Shortcut on the Desktop to launch the program. ETAP License Wizard displays the ETAP License Path Selection Editor. If a Stand-Alone or Network Security Key is located on your computer, click OK to continue.

If a Network Security Key is located on a different computer, select another path to enter the Name or IP Address of the computer where the key is located.

### 11. License Path Selection



### 12. Activation Code

ETAP will require a Software Activation Code. The code may be located on the ETAP DVD sleeve or provided - via email, to the designated ETAP Contact for your company. Copy and paste the Activation Code where indicated.

