



etap

14.1



Demo Installation Guide

*Redesigned to Deliver Unmatched Speed, Intelligence & Reliability
Boost Production by 50%*

Major Features

- 64-bit architecture and local SQL database
- Auto-Build
- Datablock & Theme Manager
- Star, Auto-Evaluation - Automated evaluation for protection & coordination
- Short Circuit Analyzer
- Contingency Analysis
- Updated Arc Flash Standards including NFPA 2015
- EMTP Interface with EMTP-RV and PSCAD
- Updated SmartPlant Electrical Interface
- AVEVA Electrical Interface
- Over 1000 Protective Device models

ETAP 14.1

- Compatibility for Window 10
- New Protective Device Settings Reports in Excel format
- Enhanced Arc Flash & Short Circuit Analyzers
- Display font handling up to 125% magnification
- Thermal Withstand Duty Evaluation for IEC Standard
- Amendment to British Standard cable sizing standard 7671: 2008-A3
- Updated IEC 60364-5-52 LV cable sizing standard
- Improved Library & Project conversions
- Refreshed Element Editors & Printing
- Underground Raceway Systems Alignment Tools
- Updated Harmonics Alert View
- Revised Protective Device library models
- Faster Crystal Report generation speed for device settings reports
- Helpline & User Guide revisions
- ETAP License Manager Installation enhancements
- Enhanced Conversion from SKM® and EasyPower® to ETAP

ETAP Real-Time

- Multistate element colors & symbols
- General Measurements Alarming
- Enhanced Quick Navigation & Toolbar layout
- Transformer Tap Control
- IEC 61850 - Support up to 125 devices per data collection concentrator
- CSV Driver Communications
- Electrical & Non-Electrical Control Commands
- Real-Time Continuity Coloring
- ILS - Load Shedding Sequence-of-Events Recording

AGC Enhancements

- Generator Maintenance Warning & Alarms
- Fuel Level Monitoring
- Forbidden Operational Areas

Customizable Reports

- Reports Designer
- ETAP SCADA & Web Report Viewer
- Automatic Report Scheduler
- Real-Time & Historical Data Access



Demo Installation Guide

This document provides a step-by-step installation procedure for ETAP 14.1 Demo. The installation program installs ETAP and all of its components including libraries, example projects, and ETAP help files. It also installs the ETAP License Manager since all stand-alone and network keys use this service to provide authorization for ETAP 14.1.

Installation Code

The ETAP 14.1 DEMO will prompt you for a 4 letter installation Code that is sent via email when signing up on our website or located on the ETAP 14.1 DEMO CD sleeve. If you cannot locate your code, please contact your sales representative at sales@etap.com.

Before Installing ETAP

1. You must have administrator rights to your computer. It is recommended to turn off the User Account Control (UAC) and the firewall during installation on Windows 7 and higher operating systems.
2. Close all other applications.

Installation Options:

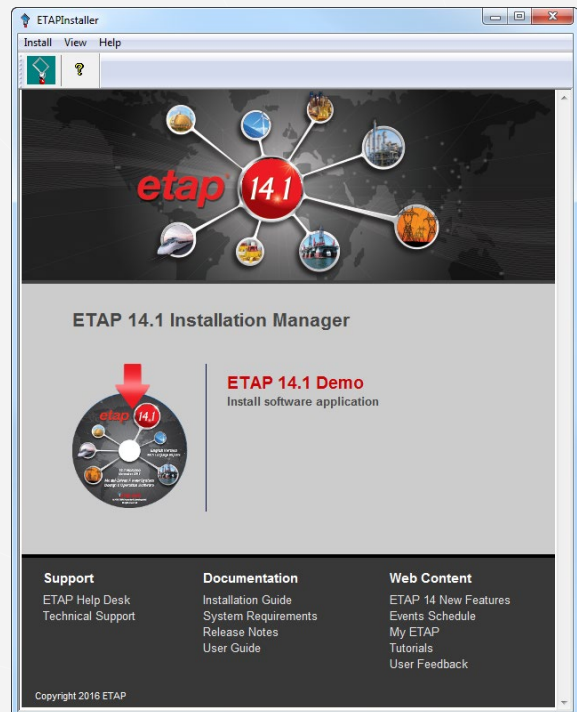
- Register and download from etap website
 - Insert ETAP 14.1 DEMO CD
- Run ETAPINSTALLER.exe

Software Requirements:

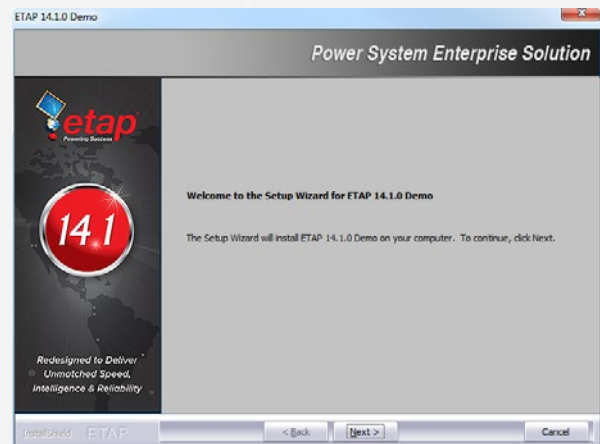
ETAP requires the following prerequisite software. These software will be automatically installed if not detected.

- Microsoft .NET Framework v4.0
- Microsoft .NET Framework v4.5
- Microsoft SQL Server 2012 Express (x64)
- Microsoft SQL Server 2012 Express LocalDB (x64)
- Microsoft Windows Update (KB2670838)

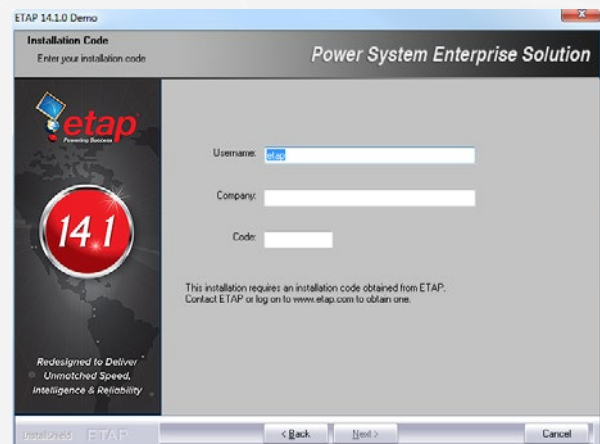
1. ETAP Installation Manager



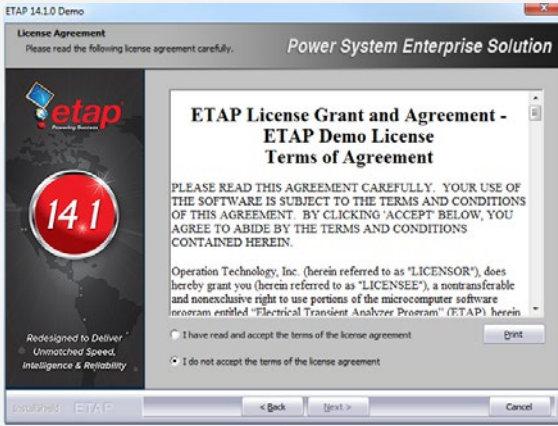
2. Welcome



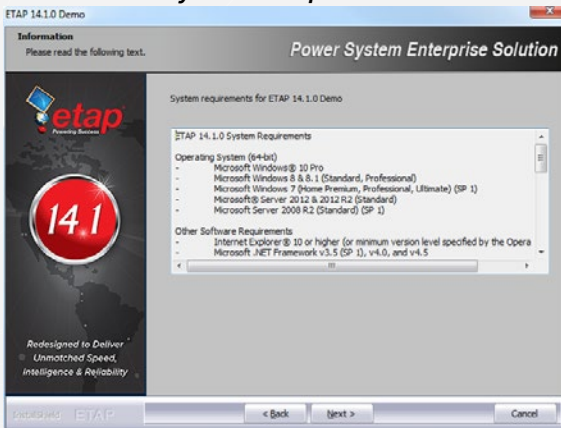
3. Installation Code



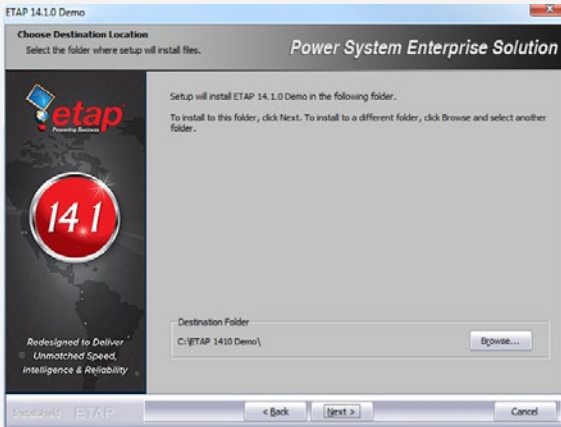
4. License Agreement



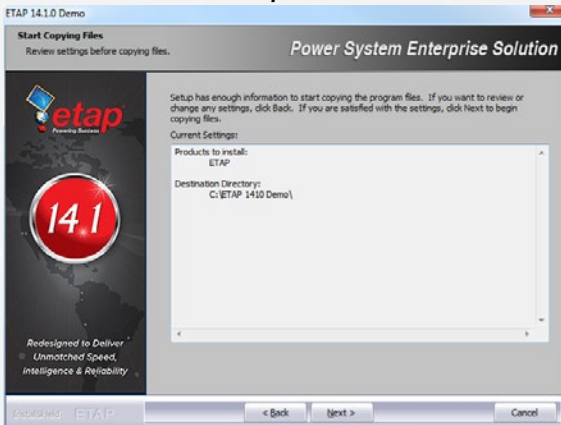
5. System Requirements



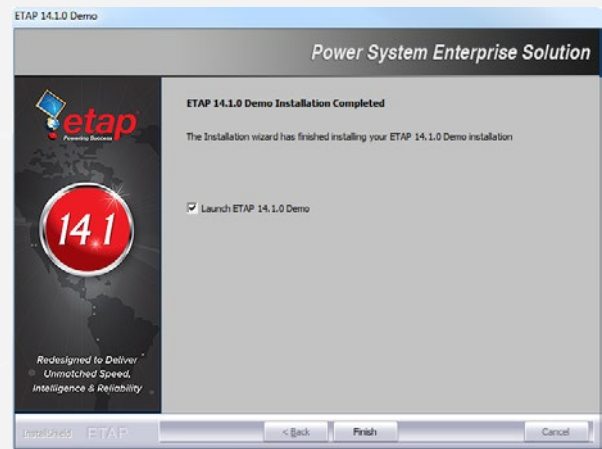
6. Destination Selection



7. Setup Review



8. Launch ETAP Demo



Start Demo

Double click on the ETAP 14.1 Demo icon that was created on your desktop during the installation.

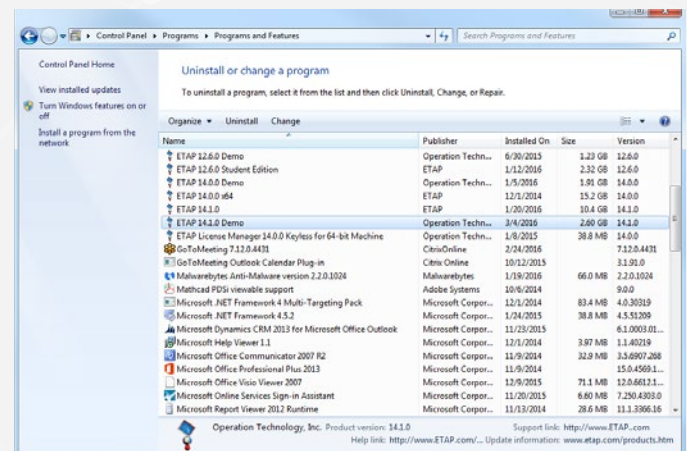


Activation Code

Once installed, the demo offers immediate access to many of the analysis modules including Load Flow, Short Circuit, Arc Flash, and Star - Device Coordination. To activate and explore other analysis modules, simply email your Return Code to ETAP to receive an Activation Code. You must have administrative rights to your computer to enter the Activation Code.

Uninstall Demo

To remove the demo from your computer, use Add or Remove Programs from the Control Panel.



Add or Remove Programs



System Requirements

Operating System (64-bit)

- Microsoft Windows® 10 Pro
- Microsoft Windows® 8 & 8.1 (Standard, Professional)
- Microsoft Windows 7 (Home Premium, Professional, Ultimate) (SP1)

Other Software Requirements

- Internet Explorer® 10 or higher (or minimum version level specified by the Operating System)
- Microsoft .NET Framework v3.5 (SP1)
- Microsoft .NET Framework v4.0
- Microsoft .NET Framework v4.5
- Microsoft SQL Server Compact 3.5 (SP2)
- Microsoft Windows Update (KB2670838)
- Microsoft SQL Server 2012 Express (x64)
- Microsoft SQL Server 2012 Express LocalDB (x64)
- Microsoft SQL Server 2012 Native Client (x64)
- Microsoft SQL Management Studio 2012 (x64)

PC Configuration Requirements

- 64-bit hardware
- USB port
- Ethernet port w/ network access (if network licensing required)
- CD Drive, 10 GB hard disk space
- 19" monitors recommended (dual monitors highly recommended)
- Recommended display resolution -1280 X 1024
- Recommended display font size - 100% - 125%

Recommended Hardware

- Intel Core i5 or better – 2.0 GHz or better (or equivalent)
- 4 GB of RAM

User Feedback

ETAP is dedicated to providing our customers with a superior product experience, and user feedback is one of the central elements of this commitment. In fact, ETAP is designed based on 95% of user suggestions and requests! We invite you to help us make a difference by filling out a short, single-page [feedback form](#). All information is confidential and will be used only by the ETAP engineering and development staff.

ETAP Training

ETAP University training events include a wide-range of power system analysis workshops, seminars, and on-site training conducted by Certified ETAP Instructors. ETAP workshops in the U.S. offer Continuing Education Units (CEUs) and a 10% discount for IEEE members.

Visit etap.com to view the current events schedule. Events are added throughout the year, so be sure to visit frequently for the latest updates.

etap.com

Support: 949.462.0400
Main: 949.900.1000
support.etap.com

Registered to ISO 9001:2008



Certification No. 10002889 QM08

© 2016 ETAP. All rights reserved. Certain names and/or logos used in this document may constitute trademarks, service marks, or trade names of ETAP. Other brand and product names are trademarks of their respective holders.