

etap[®]

etap GridCode[™]

Conform to Grid Codes & Maintain Compliance from Design,
Operations to Performance Design, Validate, Control, Audit

The unified **electrical** digital twin platform



Grid Compliance System

Maximize yields and meet TSO stability & power quality requirements at POI with ETAP Grid Compliance solution, including model-driven eSCADA platform, ePPC™ Power Plant Controller, and eTESLA™ Dynamic System Monitoring Recorder.

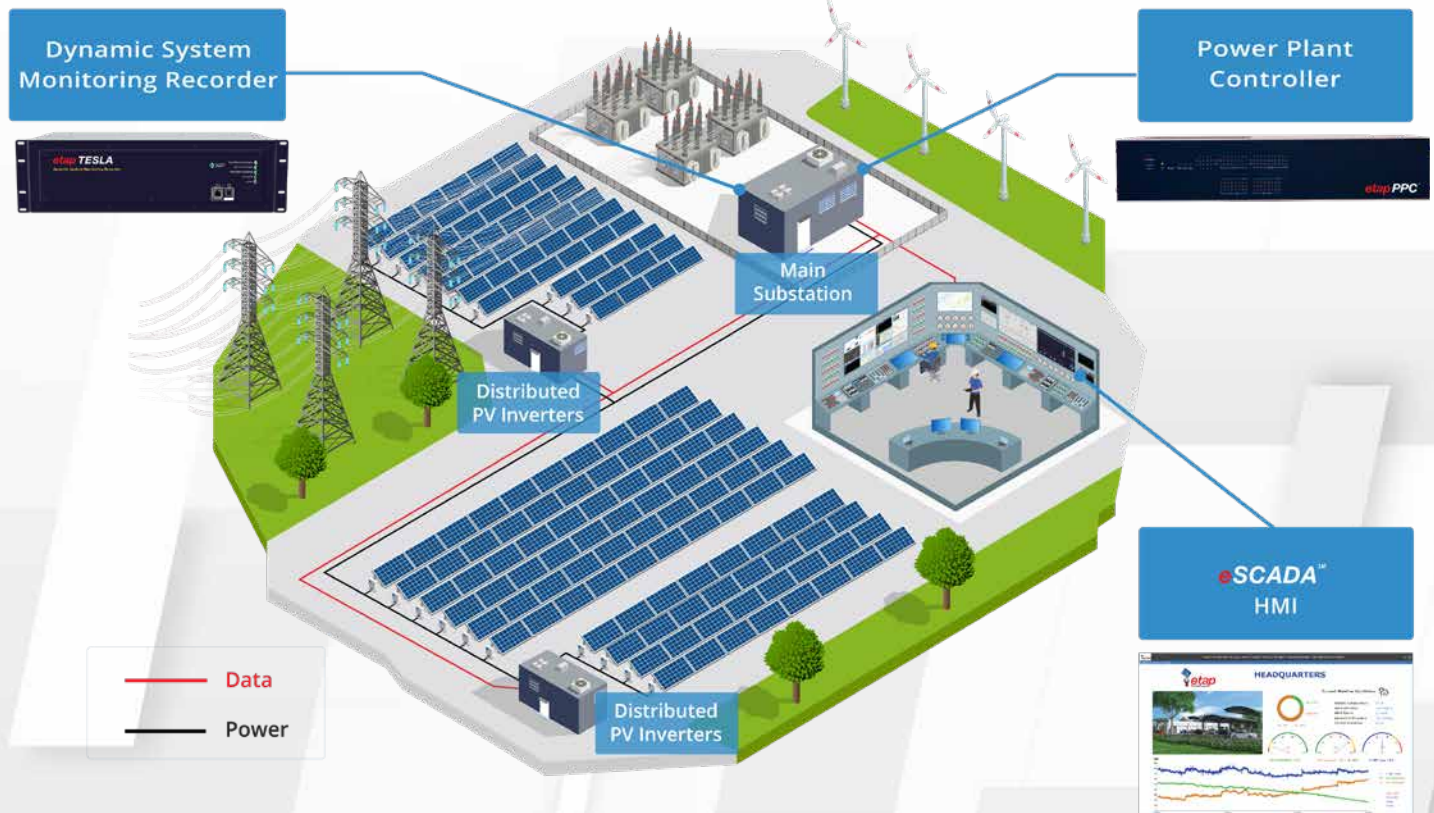
- ✓ Ensure resiliency & reliability of power supply
- ✓ Conform to grid requirements
- ✓ Reduce risk throughout planning and operations
- ✓ Full dynamic control for enhanced stability
- ✓ Power conditioning & improved power quality
- ✓ Enhance reliability by utilizing dynamic models
- ✓ Meet investor expectations of energy yield
- ✓ Accurate forecast of yield & transfer capability
- ✓ Operation, maintenance & compliance auditing
- ✓ Greater transparency & investment security

Intelligent Design & Engineering

Perform automated steady-state and transient studies, design and simulate power plant controller logic to simulate optimal grid performance under all possible situations.

Performance Testing & Validation

Test and validate power plant controller logic with ETAP SIL technology to ensure smooth commissioning and approval procedure when connecting to the grid. Reduce downtime via direct deployment or hot-swap of logic to Power Plant Controller.



+1.800.477.ETAP | +1.949.900.1000 | info@etap.com

[etap.com](https://www.etap.com)

© 2024 ETAP / Operation Technology, Inc. All rights reserved.
Certain names and/or logos used in this document may constitute trademarks, service marks, or trade names of Operation Technology, Inc.
Other brand and product names are trademarks of their respective holders.

FS2-GC-MAR2024