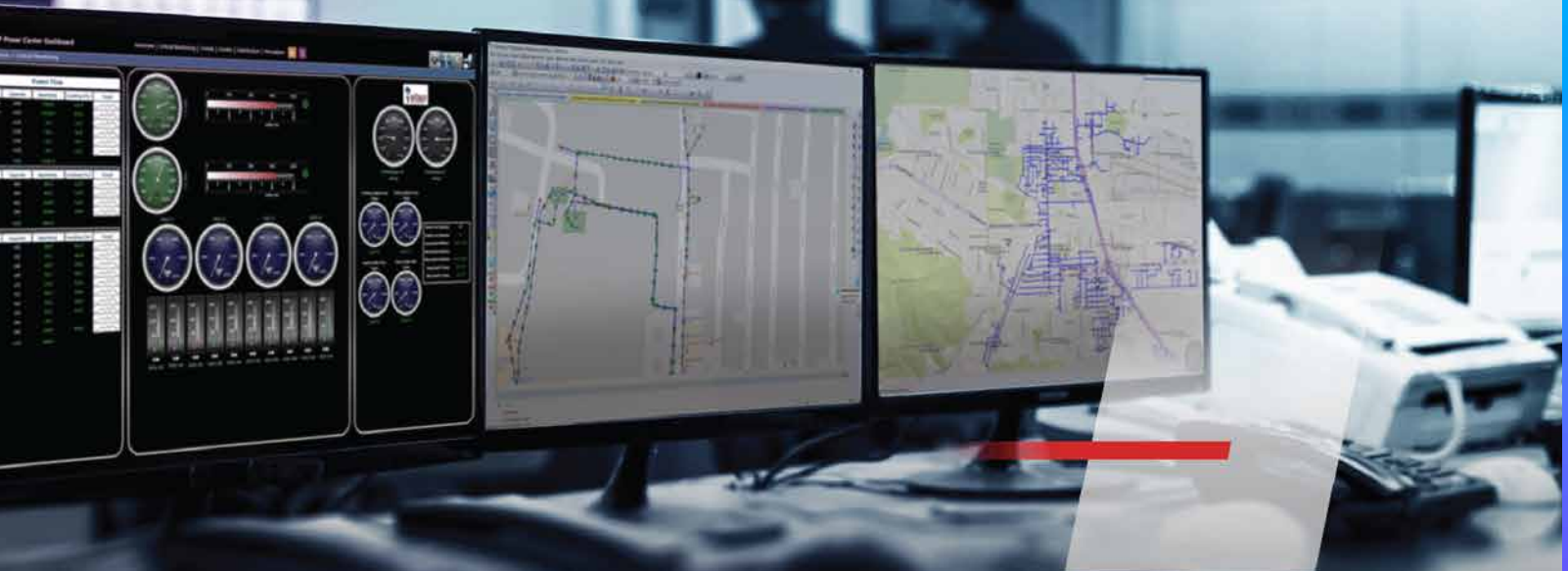


etap[®]

eSCADA[™]

Model-driven electrical SCADA software and Data Acquisition & Control hardware



The unified **electrical** digital twin platform

Model-driven monitoring provides an intuitive real-time visualization and analysis platform via intelligent graphical user interfaces, one-line diagrams, geospatial views, and digital dashboards.

Visualization & Dashboards

SCADA HMI provides a modern graphical dashboard with electrical intelligence and situational awareness. Smart visualization views, combined with predictive analytics, enable the system dispatcher to effectively view and analyze key performance indicators.

Web & Mobile Views

Access data via mobile views and applications capable of connecting to multiple ETAP Real-Time Servers and Workstations. Monitor and analyze the system from anywhere using web-based HMIs.

Data Trending

User-friendly and flexible trending application that supports real-time as well as archived data trending.

Alarming & Notification

Embedded notification system to prioritize alarms and events via graphical and tabular views for early detection of problems before a critical failure takes place. Metered and non-metered alerts based on equipment rating and capability.

Event Logging

Data acquired from monitoring devices is recorded and logged to provide a complete history of sequence-of-events (SOE) tracking and playback.

SCADA Integrator

Enables quick creation of standardized and reusable templates, efficient system integration, and rapid deployment across the entire organization.

State Estimation & Load Allocation

State Estimation processes telemetry data such as power measurements to obtain an estimate of the magnitudes and phase angles of bus voltages including the non-observable portion of the system. Comparison of measured versus estimated values provide an online validation.

Energy Accounting

Detailed energy consumption and cost analysis reports based on user-definable energy tariffs, billings, and electrical power market exchange information.

Cybersecurity

Inscription, signing, authentication, and the use of X.509 certificates are at the core of eSCADA's communication architecture and implementation including user access management and active directory authentication with area-of-responsibility verification.

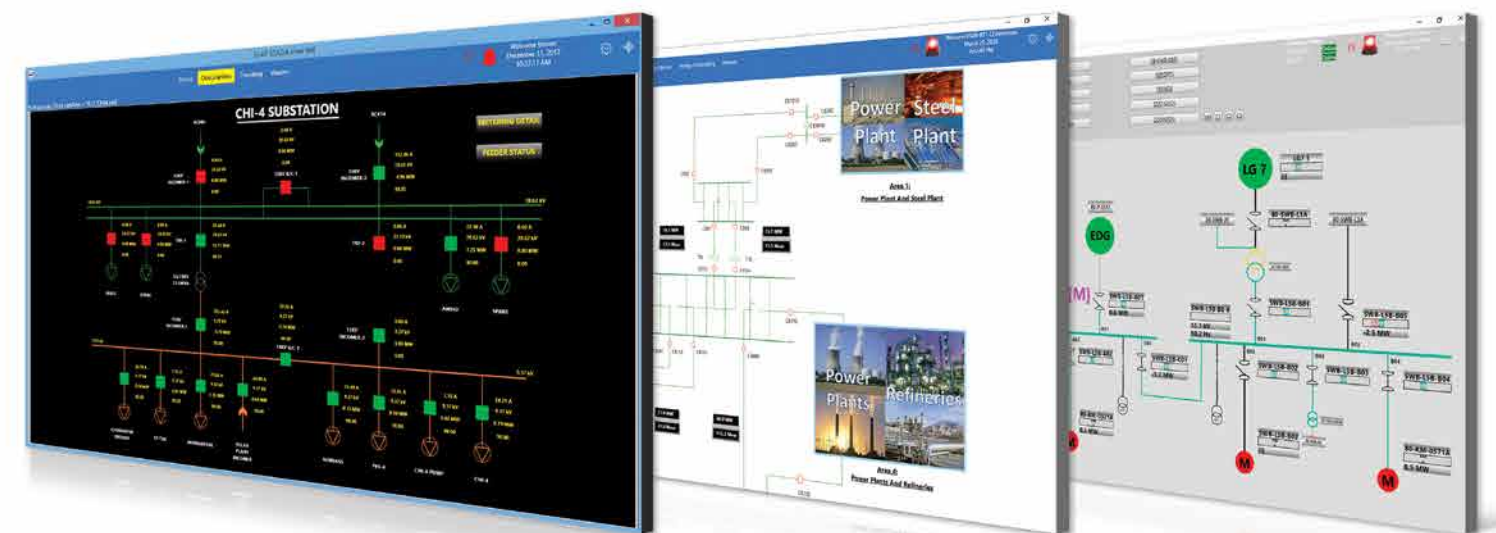
Native Communication Protocols

Connect and communicate with third-party hardware, DCS, or data collection systems regardless of manufacturer and models using built-in standard network protocols.

- IEC 61850 MMS - client & server
- IEC 61850 GOOSE - subscriber & publisher
- IEC 60870-5 - 101 / 102 / 103 / 104
- IEC 60870-6 / TASE.2 / ICCP - client & server
- Modbus RTU / TCP
- DNP3 - serial & TCP
- OLE for Process Control - OPC DA
- OPC Unified Architecture - OPC UA - client & server
- Common Information Model - CIM
- MultiSpeak
- DLMS
- IEC 62056
- Procome
- Profibus DP

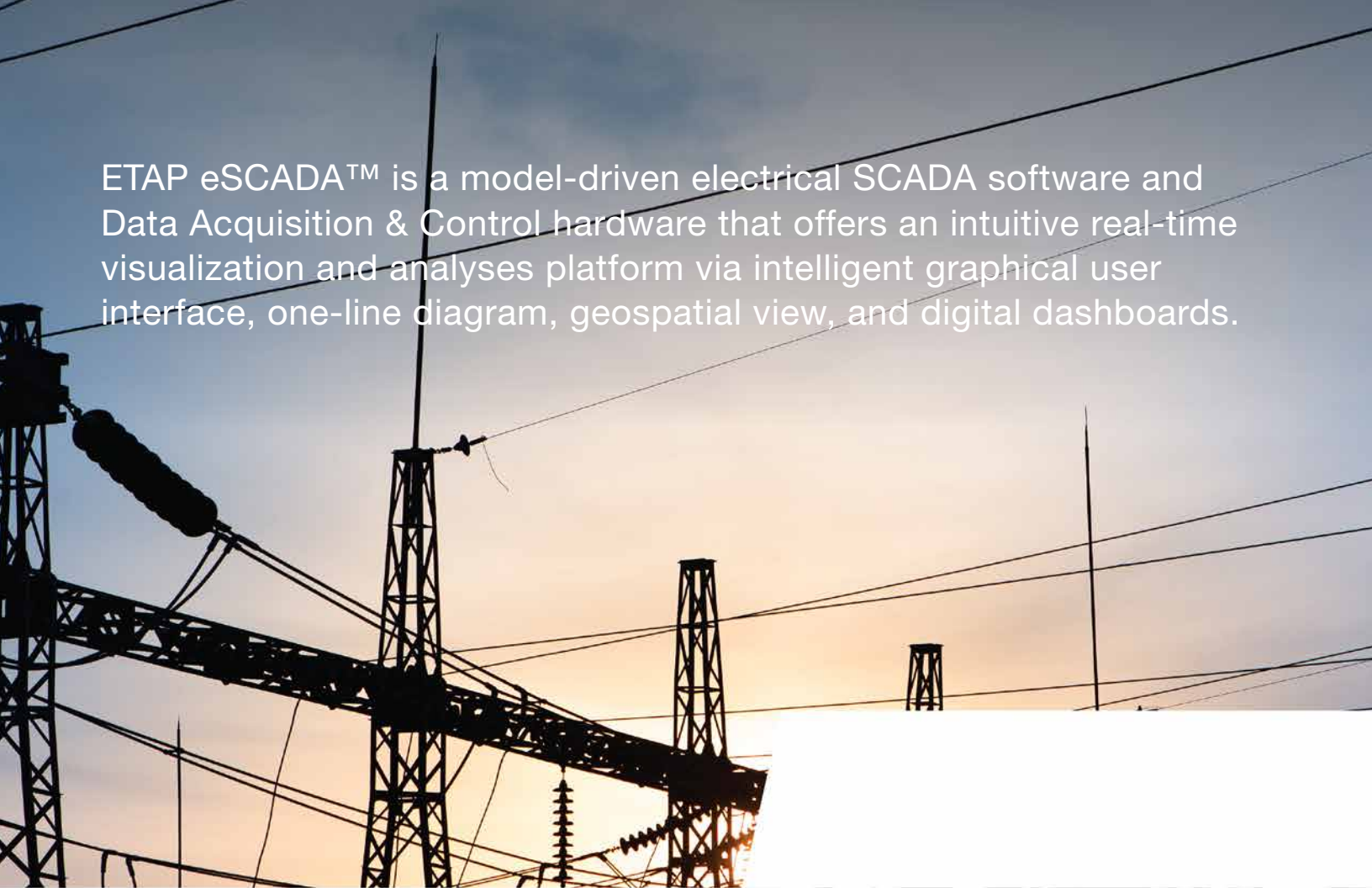


Electrical SCADA Human Machine Interface templates



Customizable web-based interfaces & technology

ETAP eSCADA™ is a model-driven electrical SCADA software and Data Acquisition & Control hardware that offers an intuitive real-time visualization and analyses platform via intelligent graphical user interface, one-line diagram, geospatial view, and digital dashboards.



+1.800.477.ETAP | +1.949.900.1000 | info@etap.com

etap.com

© 2024 ETAP / Operation Technology, Inc. All rights reserved.
Certain names and/or logos used in this document may constitute trademarks, service marks, or trade names of Operation Technology, Inc.
Other brand and product names are trademarks of their respective holders.