



DataX™

Data Exchange & Conversion

ETAP offers data exchange provides interfaces to other engineering and CAD software programs.

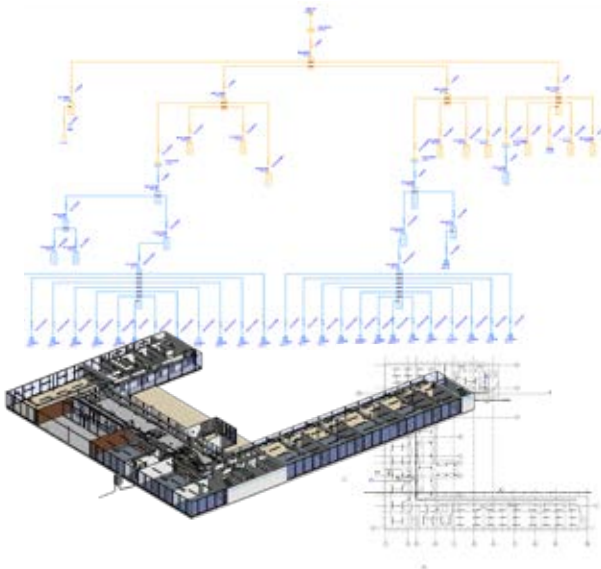


Improve productivity using data exchange tools and interfaces from standard or proprietary formats.

Autodesk Revit®

Simplify design, reduce cost, and validate Revit Electrical BIM with ETAP using enhanced time-saving data exchange features and analysis capabilities.

- Validate Revit Electrical BIM with ETAP
- Direct two-way communication
- Intelligent default auto mapping & interface
- Export simulation results
- Smart Connect: Revit plug-in to ETAP



AVEVA Engineering™

SmartPlant® Electrical

Increase efficiency for the electrical design and construction with data synchronization interface between ETAP and AVEVA or SmartPlant electrical platforms.

- Bi-directional data exchange & synchronizations
- Auto-creation of one-line diagram
- Map attributes with ETAP elements & properties
- Quickly identify the changes & merge project data
- Globally accept or reject synchronization

etapPy™

Feature-rich ETAP scripting and study automation using Python™ language.

- Integration of ETAP & Python scripting language
- API to batch run studies & generate output data reports
- Run studies remotely & in parallel across machines
- Built-in Python Script IDE or Editor

Universal Mapping

- Element & property mapping to 3rd party software
- Customizable logics & functions for electrical attributes
- Pre-defined math & power functions
- Supports CIM, ESRI ArcGIS, MultiSpeak, Excel

Microsoft® Excel

- Bi-directional Excel data exchange
- Map Excel worksheets to ETAP elements
- Perform consistency checks during data exchange
- Substitute incomplete data with defaults & library data

MultiSpeak™

- Import & export power system data
- User-defined mapping of elements & properties
- Supports MultiSpeak v3.0 & v4.0

Common Information Model - CIM

- Import & export data from ETAP using CIM XML
- User-defined mapping of elements & properties
- IEC 61970 & IEC 61968 standards

Import from Legacy Software

ETAP offers conversion tools from other power system analysis software that will automatically generate a multi-layered graphical one-line diagram in conjunction with the electrical data and associated TCC studies where possible.