



# etap<sup>®</sup> 14.1



**Redesigned to Deliver Unmatched Speed, Intelligence & Reliability**  
**Boost Production by 50%**

## ETAP 14 Major Features

- 64-bit architecture and local SQL database
- Auto-Build
- Datablock & Theme Manager
- Star, Auto-Evaluation - Automated evaluation for protection & coordination
- Short Circuit Analyzer
- Contingency Analysis
- Updated Arc Flash Standards including NFPA 2015
- EMTP Interface with EMTP-RV and PSCAD
- Updated SmartPlant Electrical Interface
- AVEVA Electrical Interface
- Over 1000 Protective Device models

## ETAP 14.1 Release Updates

This upgrade release to ETAP 14 series includes important enhancements based on the industry's latest demands such as multi-language output reports and arc flash labels.

### New Features & Enhancements

- New Protective Device Settings Reports in
  - » Excel Format
  - » Crystal Reports
- Enhanced Arc Flash Analyzer
- Enhanced Short Circuit Analyzer
- Thermal Withstand Duty Evaluation for IEC Standard
- Amendment to British Standard Cable Sizing BS 7671: 2008-A3
- Updated IEC 60364-5-52 LV Cable Sizing standard
- Updated Library Data
- Enhanced U/G Raceway Systems Alignment Tools
- Enhanced Harmonics Alert View
- Revised Protective Device Library Models
- License Manager Installation Enhancements
- Enhanced Conversion from SKM<sup>®</sup> and EasyPower<sup>®</sup> to ETAP

### **Auto-Evaluation of Protection & Coordination**

**Reduce Man-Hours**  
**Month to Minutes**

### ETAP Real-Time

- Multistate element colors & symbols
- General Measurements Alarming
- Enhanced Quick Navigation & Toolbar Layout
- Transformer Tap Control
- IEC 61850 - Support up to 125 devices per data collection concentrator
- CSV Driver Communications
- Electrical & Non-Electrical Control Commands
- Real-Time Continuity Coloring
- ILS - Load Shedding Sequence-of-Events Recording

### Customizable Reports

- ETAP SCADA & Web Report Viewer
- Automatic Report Scheduler
- Custom Report Designer
- Real-Time & Historical Data Access

### AGC Enhancements

- Generator Maintenance Warning & Alarms
- Fuel Level Monitoring
- Forbidden Operational Areas



## ETAP 14.1 Release

ETAP 14.1 Model-Driven Power System Design & Operation Software offers powerful new capabilities and productivity features to accelerate system modeling, ensure design integrity, and deliver intelligent predictive analysis.

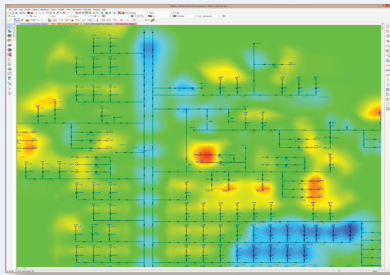
## Graphics & Database

### ETAP Foundation *New*

- 64-bit architecture
- Local SQL database
- System Manager & docking

### One-Line Diagram

- High-resolution graphics *New*
- Alignment tools
- Right-click menu
- Graphical symbol selection *New*
- Graphical contouring based on results *New*
- Display options
- Circuit Tracing *New*



### Auto-Build *New*

- Rule-Based creation of one-line
- Automatic spacing & alignment rules
- Automated voltage assignment
- Spacing & voltage rule book

### Datablock *New*

- Customize input data & study results
- Display results, input, and/or tags
- User-friendly options to display
- User-defined templates
- Share deliverables across organization

### Theme Manager *New*

- User-defined result format
- Display / hide based on
  - Zoom level
  - Equipment type
  - Equipment state
  - Info annotations
  - Study results
  - Datablocks

### Composite Network *New*

- Image presentation
  - Symbol
  - Pictures
  - Internal one-line
- Unlimited connections
- Customizable size



### Libraries

- 1000+ protective device models *New*
- Quickpick tabular views *New*
- Induction Machine Circuit Model *New*
- Multi-Function Relay
- Low Voltage Solid State Trip, LVSST

### Relay

- Current & voltage input
- Device parameters
- Base current (Ibase) *New*
- Output interlocks
- OCR & OLR functions

### License Manager

- Network license checkout
- Virtual machine support
- Keyless network licensing *New*

## Data Exchange

### SmartPlant® Electrical Interface

- Bi-directional data exchange
- Map attributes of SPEL with ETAP elements & properties using Universal Mapping

### AVEVA Electrical™ Interface *New*

- Bi-directional data exchange
- Map attributes of AVEVA Electrical with ETAP elements & properties using Universal Mapping

### Import from Legacy Software

- Built-in conversion tools
- Automatically generate multi-layered one-line diagram
- Import electrical data & protective devices
- SKM PowerTools®
- ESA EasyPower®
- PSS/E®



## Analysis Modules

### Load Flow

- Load Flow Analyzer
- Adjustments based on negative tolerance *New*
- Identify & alert modeling issues *New*

### Short Circuit Result Analyzer *New*

- View results of multiple studies in one glance
- Compare & analyze study results
- Determine worst-case duty violations
- Easily identify over duty devices

### Arc Flash

- NFPA 70E 2015 *New*
- Result Analyzer
- Sequence-of-operation for IEC Arc Flash *New*
- Main & load protective device enclosure isolation
- Conductor orientation correction factors *New*

### DC Arc Flash

- Iterative method solution for Solar Systems *New*

### Star - Protection & Coordination

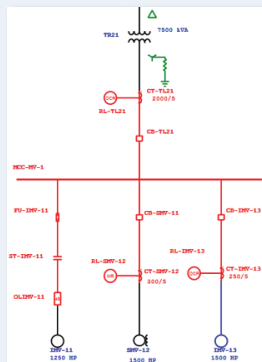
- AC Device Setting reports
- DC Device Setting reports *New*
- Panel Device Settings report *New*
- DC short-circuit
- Generator Excitation point
- Generator Stator Damage Curve
- Transformer Damage Curve
- Motor Damage Curve

### Star Auto-Evaluation: Protection & Coordination *New*

- Automated evaluation of zones for overcurrent protection & coordination
- Reference Rule Book for evaluation
- Automated display of TCC curves & equipment damage curves
- Automatic selection of worst case fault location
- Tabular & graphical presentation of evaluation results
- Interactive result viewer
- Summary of protection & coordination evaluation results
- Study result report in spreadsheet format
- Scenario and Study Wizards
- Graphical Screen Capture

### Star - TCC View

- Time Difference
- Crosshair
- Screen Capture *New*
- Label auto-layout *New*
- Low-Voltage Trip Device
- Low-Voltage Circuit Breaker Override *New*



### Contingency Analysis *New*

- N-1 & N-2 contingency assessment & ranking
- Fast screening method to scan outage list
- Multiple graphical outage lists
- Automatic performance indices calculation
- Summary report analyzer

### Cable System

- Cable insulation voltage stress *New*
- Sheath & Armor induced voltage *New*
- Underground Thermal Analysis
- Maximum cable length based on voltage *New*

### Cable Ampacity & Sizing *New*

- NF C 15-100 (French)
- IEC 60502

### Motor Dynamic Parameter Tuning *New*

- Non-linear dynamic circuit models
- Include rotor core loss, R<sub>c</sub>
- Save estimated results to library
- Match actual MFR characteristic curves

### Motor Starting *New*

- Individual bus and motor alerts
- User Definable initial bus voltages

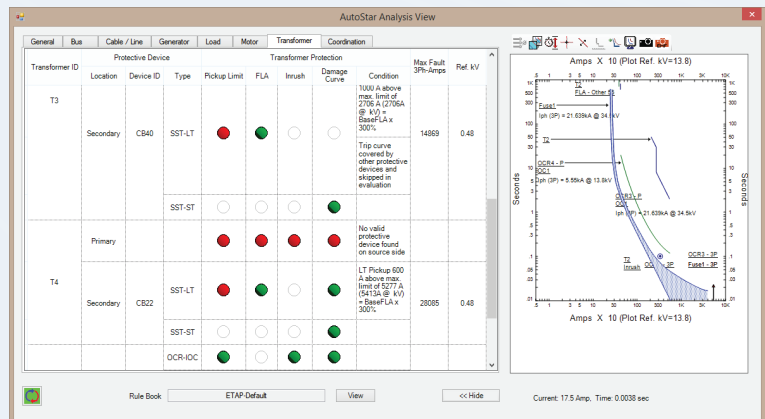
### Transient Stability

- Advanced numerical methods *New*
- Enhanced open circuit machine modeling
- More powerful automatic reference machine selection
- Load Current Compensation for more exciter models
- Improved salient pole synchronous machine modeling

### EMTP Interface *New*

- EMTP-RV
- PSCAD

Extensive Messages      Tabular And Graphical Evaluation Results      Colorful Status Indication      Max Through Fault Current





## Engineering Workstation

- Localized SCADA views & configuration
- Multistate breaker color & symbols
- Communication failure display
- Taglink alarming
- Component flashing for abnormal states
- Identify non-tagged components
- Graphical WPF Views – control, pinning & flashing
- Failed control identification
- Alarm inhibition

## System Communications

- IEC 61850
  - Sequence of Event reports
  - Buffered reports
- Modbus TCP
  - Performance & data quality
  - Event based polling
- DNP3
  - Sequence of Event reports
  - Class polling 0, 1, 2, 3
- Automatic failure recovery
- Connection status monitoring
- XML based messaging

## Data Captures & Notification <sup>New</sup>

- Sequence of events & waveform capture
  - General Electric
  - Schneider Electric
  - Schweitzer Engineering Laboratories
  - Electro Industries, Nexus
- Vaisala weather service
- Short Message Service, SMS

## Unit Commitment <sup>New</sup>

- Real-Time validation & optimization
- Forecast based commitment
- Maintenance schedules

## Web Real-Time Consoles

- Configurable GIS View
- Enhanced Trending
- Additional Component Library
- Import GIS Views
- Editable Gauge Components
- Event Display on GIS Views

## SCADA Viewer

- OPC UA Client
- WPF technology
- Full WebRT features in a workstation software
- Automatically import web views & ETAP models
- WPF Designer
- Control & alarm management
- Improved simulation capabilities

## Sequence of Events

- Log operator events
- Log operator logins
- Enhanced WPF views
- Automatic MongoDB replication
- Customizable display and messaging
- Linked to ETAP and SCADA Viewer
- User-defined themes

## SCADA Integrator <sup>New</sup>

- Metering device library
- Auto configuration of communication device drivers
- Auto-generation of communications tags
- Alarm groups
- Tag state groups
- AGC enhancements

## Intelligent Load Shedding

- ILS Event Analyzer



Follow us:



Visit [etap.com](http://etap.com) to view the current events schedule. Events are added throughout the year, so be sure to visit frequently for the latest updates.

## Quality Assurance Commitment

ETAP is Verified and Validated (V&V) against field results, real system measurements, established programs, and hand calculations to ensure its technical accuracy. Each release of ETAP undergoes a complete V&V process using thousands of test cases for each and every calculation module. ETAP Quality Assurance program is specifically dedicated to meeting the requirements of:

Registered to ISO 9001:2008



ISO 9001:2008

ASME NQA-1

10 CFR 50 Appendix B

CAN / CSA-Q396.1.2

10 CFR Part 21

ANSI / IEEE 730.1

10 CFR Part 50.55

ANSI N45.2.2

ANSI/ASME N45.2

Certification No. 10002899 QM08

© 2016 ETAP / Operation Technology, Inc. All rights reserved. Certain names and/or logos used in this document may constitute trademarks, service marks, or trade names of Operation Technology, Inc. Other brand and product names are trademarks of their respective holders.