

e-DPP

Module

Specify Schedule Automate

Electrical Data Processing Program (e-DPP) is developed by Eltechs Company in Japan, as a complimentary product to ETAP. It is a highly flexible tool that handles large amounts of electric power system data. e-DPP has comprehensive equipment data sheet templates, schedule templates, and customizable default libraries. Operate e-DPP in batch mode, to automate the generation of the electrical schedules and data sheets. The ETAP - e-DPP interface is a tool for exchanging data between ETAP and e-DPP. It uses information available in e-DPP to add, modify, and delete elements in ETAP.

e-DPP and "ETAP - e-DPP Interface"

e-DPP Key Features

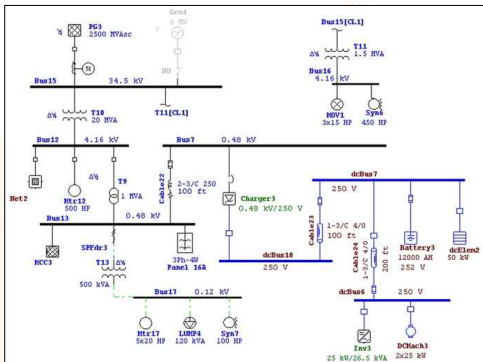
- Standardization of Engineering Know-How
- Standard/User Designed Form Sheets
- Easy to Use (similar to MS Excel)
- Link with User Database and ETAP

e-DPP Features

- Sophisticated & user-friendly GUI
- Customizable data sheets, schedule templates, equipment libraries, & equipment default data
- Flexible operation & revision control
- Excel-like user interface
- Study options – load summary, power cable sizing, cable conduit, & gland sizing
- Import capability from Microsoft® Excel®, Access®, & ETAP
- Batch mode

e-DPP Benefits

- Unlimited electrical loads, library records, & user templates
- Unlimited revisions
- Default templates & libraries
- Save time & money by reducing hours required for data entry
- Designed for high performance engineering work



"We have found the best candidate for becoming a standard Engineering Tool in our department."

-Mitsui Engineering & Shipbuilding

"e-DPP creates excellent reports in MS Excel and its interface with ETAP provides quick analysis capabilities."

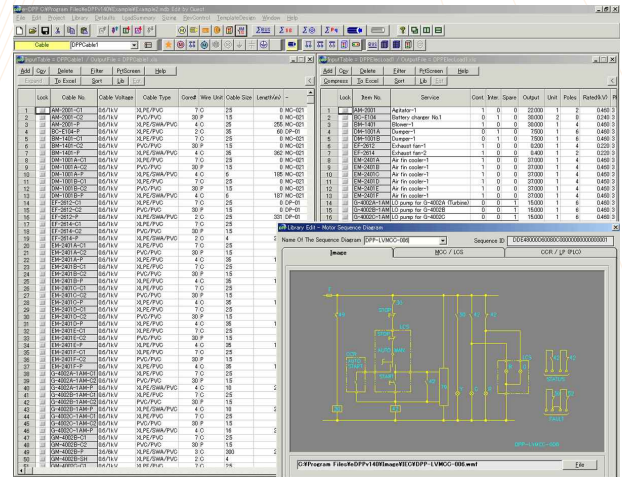
-JGC Corporation

"We like the software due to flexible functions for User-Defined Field, Customized User Forms, Revision Control and so on."

-CHIYODA Corporation

ETAP - e-DPP Interface Key Features

- Map e-DPP Equipment to ETAP Elements
- Integration with ETAP Projects
- Use ETAP Library Data
- Use ETAP Analysis Tools



Interface Features

- Database mapping via a graphic user interface
- Data range checking
- Data consistency checking
- Library data addition
- Typical data substitution for missing parameters
- Perform add, modify, or delete actions
- Log all mapping actions
- View modifications & accept / reject actions via graphic user interface
- Integrate with ETAP projects

Interface Benefits

- Significantly reduce hours needed to perform system studies
- Flexibility to use all ETAP modules for analysis
- Avoid duplicate / incorrect data entry
- Direct communication with e-DPP
- Enter data in e-DPP and / or ETAP

